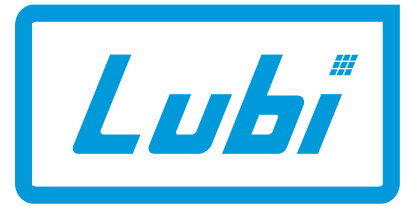
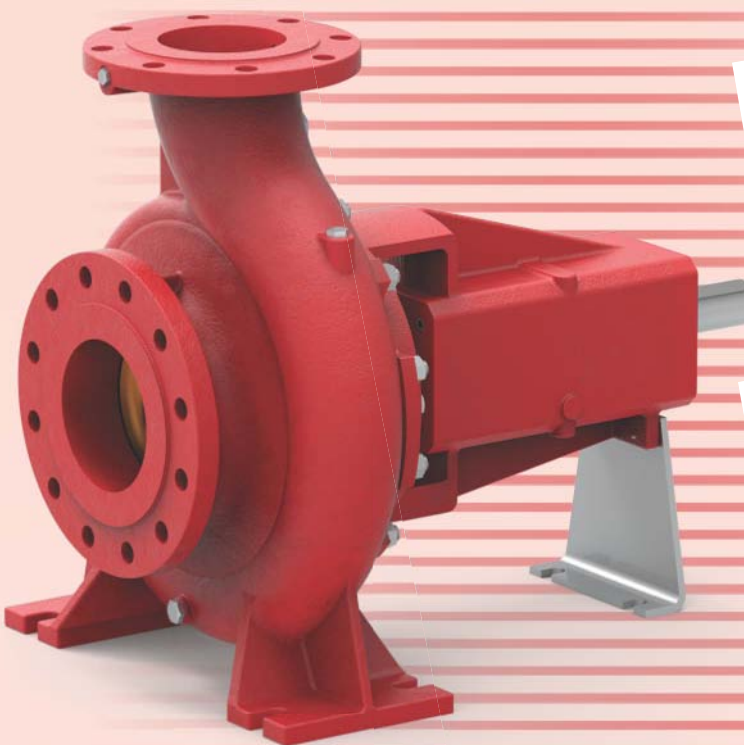
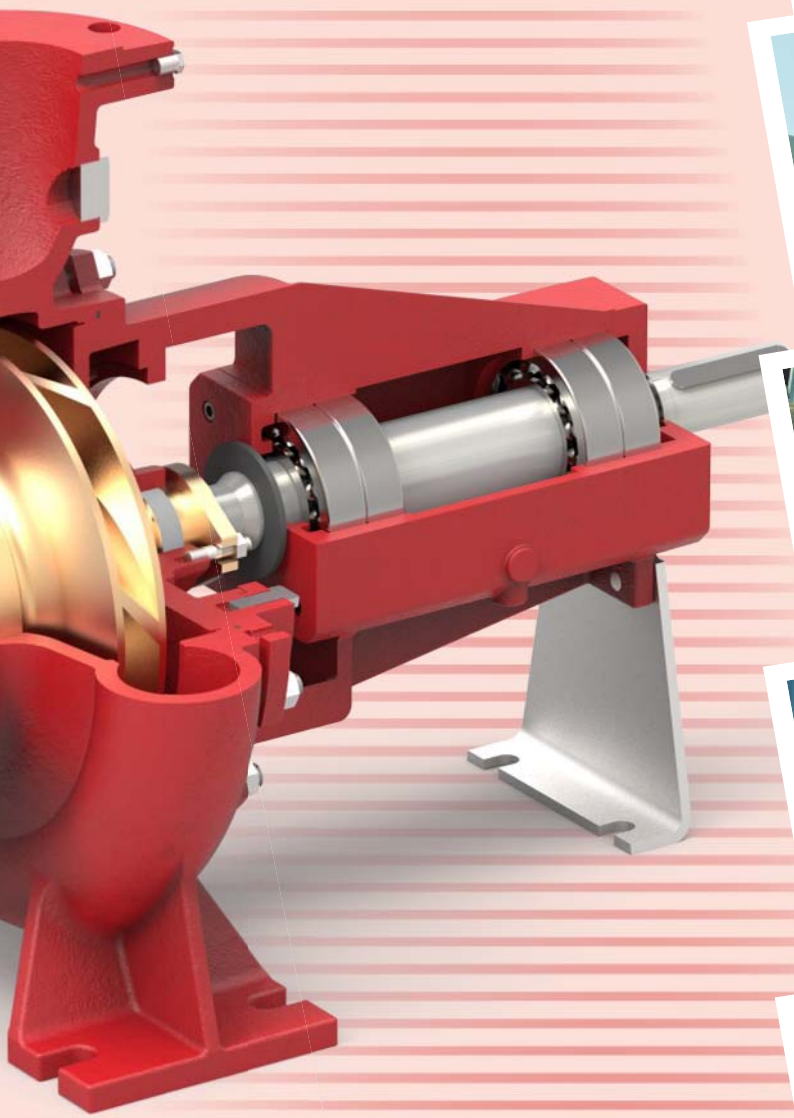


End Suction Fire Pumps  
UL Listed  
60 Hz





Photographs of a few Manufacturing Units

# Contents

## End Suction Fire Pumps

**FLBS**

### Identification

Type key - Fire pump 3

### Product data

Introduction 4  
Applications 4  
Features and benefits 4  
General Pump Features 5  
Exploded View 6  
Dimensions 7  
Flange Dimensions 7

### Product range

Approved Fire Pump Models with Rating 8  
End Suction Quick Selection guide 11

### Type keys - Fire pump

#### FLBS

**Example** \_\_\_\_\_ **FLBS** **125 - 100 - 250**

Type range

Suction size (mm)

Delivery size (mm)

Nominal Impeller diameter (mm)

### Introduction

Lubi offers FLBS series state-of-the-art fire pumps with diesel engine or electric motor driven, single-stage End-Suction pump.

These pumps are typically used in fire-fighting applications for supplying water to fire hose reels, fire hydrants or sprinkler systems.

Pumps have a discharge range from 100 to 1250 USgpm and the head range from 5.24 to 20.61 bar.

These fire pumps meet or exceed the requirements of NFPA20.

Installations of these pumps would ensure the safety of human life, buildings, and expensive equipments and plants. FLBS fire pumpset shall be used only where a positive suction is provided as specified in NFPA20.

These fire pumps typically consists of the following equipments:

- Single-Stage End-Suction pump
- Electric motor or Diesel Engine
- Cooling system for Diesel Engine
- Fuel system for Diesel Engine
- Battery for Diesel Engine electric start
- Exhaust system for Diesel Engine
- Diesel Engine / Electric Motor Fire pump controller
- Suction and Discharge pressure gauges
- Casing Relief Valve for Motor Fire pump
- Base frame

All above equipments except fuel supply tank and fire pump controller are mounted on a common base frame.

Lubi can also supply packaged fire pumping system with all required accessories ready for site installation.

### Applications

The FLBS fire pumpsets are used in small capacity, diesel engine or motor driven fire-fighting applications for supplying water to fire hose reels, fire hydrants or sprinkler systems in areas which are prone to the hazards of fire.

The typical applications are as follow:

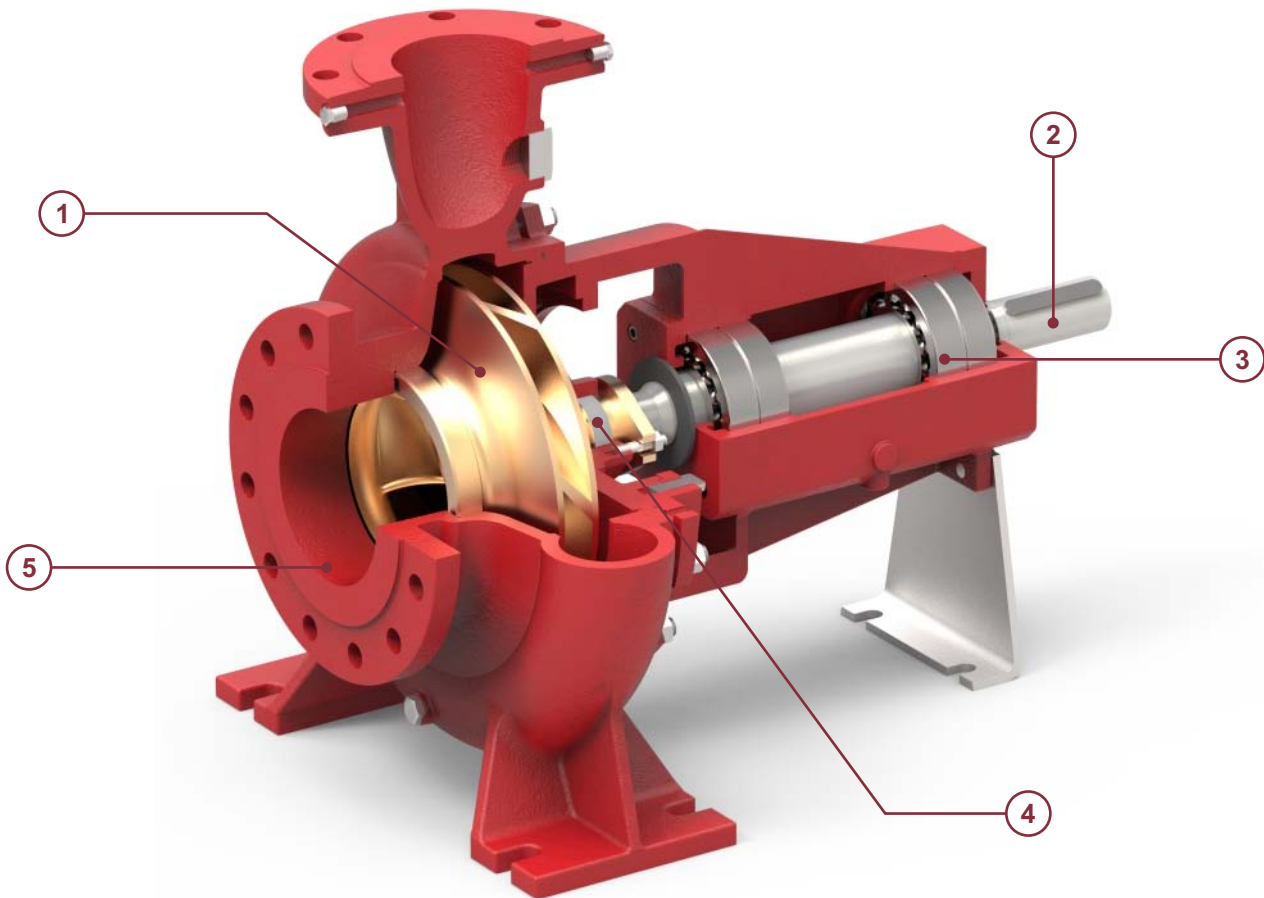
- Commercial complexes & high rise buildings
- Petrochemical industries and Gas plants
- Airports and ports
- Jetties
- Marine applications
- Power stations and transformer stations
- Chemical industries
- Manufacturing plants
- Fire-work industries
- Warehouses / godowns

### Features & benefits

FLBS fire pumpset offers all the features & benefits as mentioned in our LBS standard pump series data booklet. Following are the additional features & benefits offered by these pumpsets:

- State-of-the-art design fire pumping system.
- NFPA-20 design
- Compact diesel engine driven pump package
- Rugged construction
- More economical than Horizontal Split Case diesel fire pump packages
- Back pull-out design which simplifies inspection and maintenance without disturbing pipe work
- The pump impellers are dynamically balanced to grade 6.3 of ISO 1940-1
- Efficient operation
- Lower initial cost
- Reduced installation time and cost
- Easy access to all working parts
- Ease of maintenance
- Single source unit responsibility.

### General Pump Features



#### 1 - Impeller & Casing

- Impeller is dynamically balanced to grade G6.3 balance quality in accordance to ISO 1940-1.
- Impeller & Casing are designed using state of art CFD tools to ensure optimal performance.

#### 2 - Shaft

- Heavy duty stainless steel shaft completely sealed and dry for zero corrosion.
- Short and rigid with negligible vibrations.
- Replaceable shaft protecting sleeves.
- No threads exposed to pump medium, long operating life and no corrosion.
- Adjustment-free assembly.

#### 3 - Bearing

- Heavy duty and permanently grease lubricated antifriction bearings for long service life.
- Open gland, enough space for service activities.

#### 4 - Seal

- Asbestos - free, soft packed stuffing boxes.

#### 5 - Casing

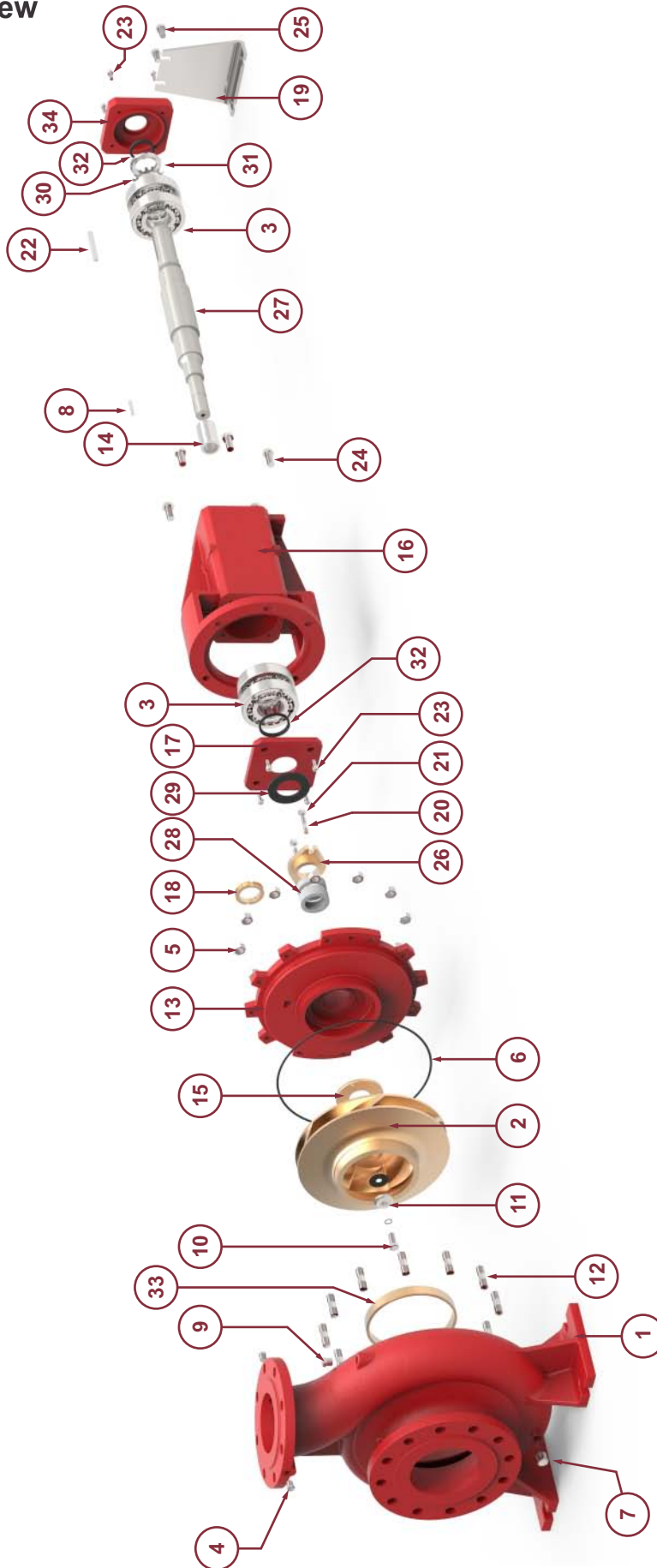
- End Suction backpullout design permits maintenance of the pump without removing the pipes.
- Rugged Ball Bearings on Drive as well as Non Drive end.
- Flange drilled as per ANSI B16.1 class 250.
- Smooth surface inside & CED coated for superior corrosion protection.
- Replaceable wear ring protect the casing and the impeller running clearances.
- Heavy duty casing design for high working pressure.

# Product data

## End Suction Fire Pumps

FLBS

### Exploded View



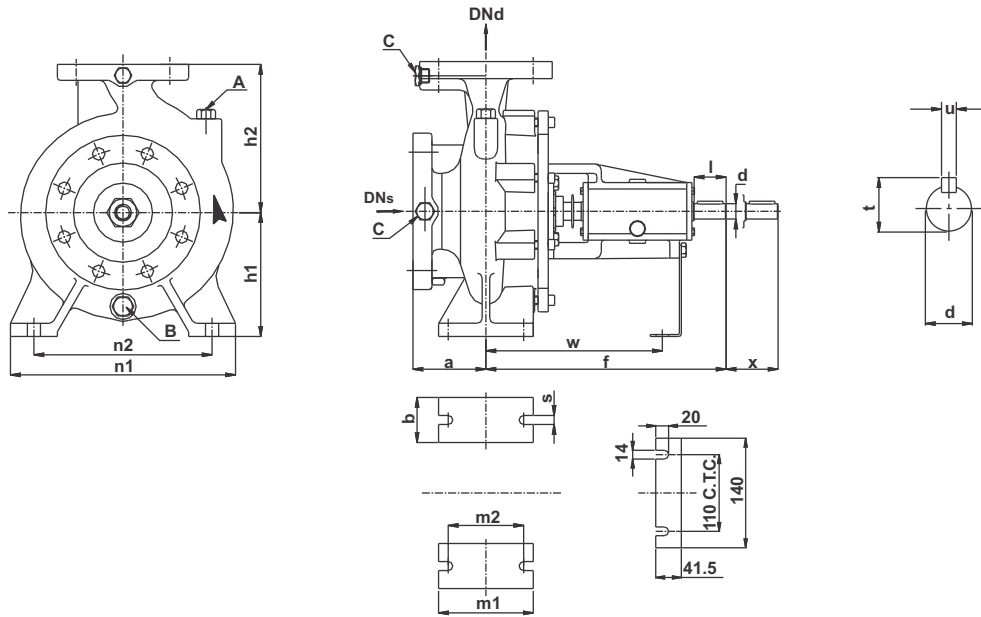
Part no.	Part name	Part no.	Part name	Part no.	Part name	Part no.	Part name
1	Casing	11	Impeller Washer	21	Hex Nut	31	Ring Nut
2	Impeller	12	Stud	22	Key	32	V-seal
3	Ball Bearing	13	Back Cover	23	Cap Screw	33	Wear Ring
4	Plug	14	Shaft Sleeve	24	Hex Bolt	34	Bearing Cover (DE)
5	Hex Nut	15	Gland Cover	25	Hex Bolt		
6	'O' Ring	16	Bearing Bracket	26	Gland		
7	Plug	17	Bearing Cover (NDE)	27	Shaft		
8	Key	18	Lentern Ring	28	Graphite Packing		
9	Plug	19	Foot	29	Water Thrower		
10	Hex Bolt	20	Stud	30	Locking Washer		

# Product data

## End Suction Fire Pumps

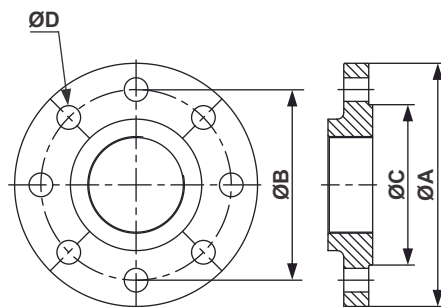
**FLBS**

### Dimensions



Model	DN <sub>s</sub>	DN <sub>d</sub>	a	b	d.k6	f	h <sub>1</sub>	h <sub>2</sub>	l	m <sub>1</sub>	m <sub>2</sub>	n <sub>1</sub>	n <sub>2</sub>	s	t	u	w	x	A	B	C
<b>FLBS 65-40-250</b>	65	40	100	65	24	360	180	225	50	125	95	320	250	14	27	8	260	100	Ø3/8"	Ø1/2"	Ø1/4"
<b>FLBS 80-65-250</b>	80	65	100	80	42	482	200	250	80	160	120	360	280	18	45	12	340	140	Ø3/8"	Ø1/2"	Ø1/4"
<b>FLBS 125-100-200</b>	125	100	125	80	42	482	200	250	80	160	120	360	280	18	45	12	340	140	Ø3/8"	Ø1/2"	Ø1/4"
<b>FLBS 125-100-250</b>	125	100	140	80	42	527	225	280	110	160	120	400	315	18	45	12	360	140	Ø3/8"	Ø1/2"	Ø1/4"
<b>FLBS 125-100-315</b>	125	100	140	80	48	630	250	315	110	160	120	400	315	18	51.5	14	445	140	Ø3/8"	Ø1/2"	Ø1/4"
<b>FLBS 150-125-250</b>	150	125	140	80	42	630	250	355	110	160	120	400	315	18	51.5	14	445	140	Ø3/8"	Ø1/2"	Ø1/4"
<b>FLBS 150-125-315</b>	150	125	140	100	48	640	280	355	110	200	150	500	400	22	51.5	14	455	140	Ø3/8"	Ø1/2"	Ø1/4"

### Flange Dimensions



### ANSI 250 Flange Dimensions

Model	Suction				Discharge			
	ØA	ØB	ØC	ØD x Nos. of holes	ØA	ØB	ØC	ØD x Nos. of holes
<b>FLBS 65-40-250</b>	190	149	125	Ø7/8" x 8	155	114	91	Ø7/8" x 4
<b>FLBS 80-65-250</b>	210	168	144	Ø7/8" x 8	190	149	125	Ø7/8" x 8
<b>FLBS 125-100-200</b>	280	235	211	Ø7/8" x 8	255	200	176	Ø7/8" x 8
<b>FLBS 125-100-250</b>	280	235	211	Ø7/8" x 8	255	200	176	Ø7/8" x 8
<b>FLBS 125-100-315</b>	280	235	211	Ø7/8" x 8	255	200	176	Ø7/8" x 8
<b>FLBS 150-125-250</b>	320	270	246	Ø7/8" x 12	280	235	211	Ø7/8" x 8
<b>FLBS 150-125-315</b>	320	270	246	Ø7/8" x 12	280	235	211	Ø7/8" x 8

# Product range

## End Suction Fire Pumps

# FLBS

### Approved Fire Pump Models with Rating

RATED CAPACITY- 100 US GPM									
Sr. No.	Pump Model	UL Listed Pressure		FM Approved Pressure		Rated Speed (rpm)	Suction Inlet Dia. (inch)	Discharge Outlet Dia. (inch)	Stage(s)
		(psi)	(bar)	(psi)	(bar)				
1	<b>FLBS 80-65-250</b>	87-191	5.99-13.16	-	-	3550	3	2.5	1
2	<b>FLBS 80-65-250</b>	84-134	5.79- 9.23	-	-	2900	3	2.5	1
3	<b>FLBS 65-40-250</b>	95-127	6.55- 8.73	-	-	2900	2.5	1.5	1

RATED CAPACITY- 150 US GPM									
Sr. No.	Pump Model	UL Listed Pressure		FM Approved Pressure		Rated Speed (rpm)	Suction Inlet Dia. (inch)	Discharge Outlet Dia. (inch)	Stage(s)
		(psi)	(bar)	(psi)	(bar)				
1	<b>FLBS 80-65-250</b>	84-191	5.7-13.16	-	-	3550	3	2.5	1
2	<b>FLBS 80-65-250</b>	83-135	5.72- 9.30	-	-	2900	3	2.5	1

RATED CAPACITY- 200 US GPM									
Sr. No.	Pump Model	UL Listed Pressure		FM Approved Pressure		Rated Speed (rpm)	Suction Inlet Dia. (inch)	Discharge Outlet Dia. (inch)	Stage(s)
		(psi)	(bar)	(psi)	(bar)				
1	<b>FLBS 80-65-250</b>	81-191	5.58-13.16	-	-	3550	3	2.5	1
2	<b>FLBS 80-65-250</b>	81-135	5.58-9.30	-	-	2900	3	2.5	1

RATED CAPACITY- 250 US GPM									
Sr. No.	Pump Model	UL Listed Pressure		FM Approved Pressure		Rated Speed (rpm)	Suction Inlet Dia. (inch)	Discharge Outlet Dia. (inch)	Stage(s)
		(psi)	(bar)	(psi)	(bar)				
1	<b>FLBS 80-65-250</b>	76-191	5.2-13.16	-	-	3550	3	2.5	1
2	<b>FLBS 80-65-250</b>	78-134	5.37-9.23	-	-	2900	3	2.5	1

RATED CAPACITY- 300 US GPM									
Sr. No.	Pump Model	UL Listed Pressure		FM Approved Pressure		Rated Speed (rpm)	Suction Inlet Dia. (inch)	Discharge Outlet Dia. (inch)	Stage(s)
		(psi)	(bar)	(psi)	(bar)				
1	<b>FLBS 125-100-200</b>	87-123	5.9-8.48	-	-	3550	5	4	1
2	<b>FLBS 125-100-250</b>	120-195	8.27-13.44	-	-	3550	5	4	1
3	<b>FLBS 125-100-250</b>	94-132	6.48-9.10	-	-	2900	5	4	1



# Product range

## End Suction Fire Pumps

# FLBS

### Approved Fire Pump Models with Rating

RATED CAPACITY- 400 US GPM									
Sr. No.	Pump Model	UL Listed Pressure		FM Approved Pressure		Rated Speed (rpm)	Suction Inlet Dia. (inch)	Discharge Outlet Dia. (inch)	Stage(s)
		(psi)	(bar)	(psi)	(bar)				
1	<b>FLBS 125-100-200</b>	86-122	5.92-8.41	-	-	3550	5	4	1
2	<b>FLBS 125-100-250</b>	118-195	8.13-13.44	-	-	3550	5	4	1
3	<b>FLBS 125-100-315</b>	176-299	12.13-20.61	-	-	3550	5	4	1
4	<b>FLBS 125-100-250</b>	93-131	6.41-9.03	-	-	2900	5	4	1
5	<b>FLBS 125-100-315</b>	122-207	8.41-14.27	-	-	2900	5	4	1

RATED CAPACITY- 450 US GPM									
Sr. No.	Pump Model	UL Listed Pressure		FM Approved Pressure		Rated Speed (rpm)	Suction Inlet Dia. (inch)	Discharge Outlet Dia. (inch)	Stage(s)
		(psi)	(bar)	(psi)	(bar)				
1	<b>FLBS 125-100-200</b>	84-122	5.79-8.41	-	-	3550	5	4	1
2	<b>FLBS 125-100-250</b>	117-194	8.06-13.3	-	-	3550	5	4	1
3	<b>FLBS 125-100-315</b>	175-298	12.06-20.54	-	-	3550	5	4	1
4	<b>FLBS 125-100-250</b>	92-131	6.34-9.03	-	-	2900	5	4	1
5	<b>FLBS 125-100-315</b>	121-207	8.34-14.27	-	-	2900	5	4	1

RATED CAPACITY- 500 US GPM									
Sr. No.	Pump Model	UL Listed Pressure		FM Approved Pressure		Rated Speed (rpm)	Suction Inlet Dia. (inch)	Discharge Outlet Dia. (inch)	Stage(s)
		(psi)	(bar)	(psi)	(bar)				
1	<b>FLBS 125-100-200</b>	83-122	5.75-8.41	-	-	3550	5	4	1
2	<b>FLBS 125-100-250</b>	116-194	7.99-13.37	-	-	3550	5	4	1
3	<b>FLBS 125-100-315</b>	174-298	11.99-20.54	-	-	3550	5	4	1
4	<b>FLBS 125-100-250</b>	91-130	6.27-8.96	-	-	2900	5	4	1
5	<b>FLBS 125-100-315</b>	120-207	8.27-14.27	-	-	2900	5	4	1

# Product range

## End Suction Fire Pumps

# FLBS

### Approved Fire Pump Models with Rating

RATED CAPACITY- 750 US GPM									
Sr. No.	Pump Model	UL Listed Pressure		FM Approved Pressure		Rated Speed (rpm)	Suction Inlet Dia. (inch)	Discharge Outlet Dia. (inch)	Stage(s)
		(psi)	(bar)	(psi)	(bar)				
1	<b>FLBS 125-100-200</b>	77-118	5.30-8.13	-	-	3550	5	4	1
2	<b>FLBS 125-100-250</b>	110-191	7.58-13.16	-	-	3550	5	4	1
3	<b>FLBS 125-100-315</b>	167-296	11.51-20.40	-	-	3550	5	4	1
4	<b>FLBS 125-100-250</b>	86-125	5.92-8.61	-	-	2900	5	4	1
5	<b>FLBS 125-100-315</b>	111-203	7.65-13.99	-	-	2900	5	4	1

RATED CAPACITY- 1000 US GPM									
Sr. No.	Pump Model	UL Listed Pressure		FM Approved Pressure		Rated Speed (rpm)	Suction Inlet Dia. (inch)	Discharge Outlet Dia. (inch)	Stage(s)
		(psi)	(bar)	(psi)	(bar)				
1	<b>FLBS 150-125-250</b>	101-183	6.9-12.61	-	-	3550	6	5	1
2	<b>FLBS 150-125-315</b>	153-220	10.54-15.16	-	-	3550	6	5	1
3	<b>FLBS 150-125-315</b>	104-188	7.17-12.96	-	-	2900	6	5	1

RATED CAPACITY- 1250 US GPM									
Sr. No.	Pump Model	UL Listed Pressure		FM Approved Pressure		Rated Speed (rpm)	Suction Inlet Dia. (inch)	Discharge Outlet Dia. (inch)	Stage(s)
		(psi)	(bar)	(psi)	(bar)				
1	<b>FLBS 150-125-315</b>	146-217	10.06-14.96	-	-	3550	6	5	1

# Product range

## End Suction Fire Pumps

**FLBS**

### End Suction Quick Selection guide

Rated Capacity in GPM (LPM)	Pressure in PSi(Bar) for Electric Motor driven Pump	Pump Model for Electric Driven	Pressure in PSi(Bar) for Diesel Engine driven Pump	Pump Model for Diesel Engine Driven	Rated Pressure in Bar	Jockey Pump Flow in USgpm	Jockey Pump Model	Electric Motor HP @ (3550 RPM)	Clarke DIESEL ENGINE HP @ (2100 RPM & 3000 RPM)	Jockey Pump HP @ 3450 RPM
<b>100 (378)</b>	87-191 (5.99- 13.16)	FLBS 65-250	84-134 (5.79- 9.23)	FLBS 65-250	6	5	LCR 1-08	15 HP	45 HP/3000 RPM	1HP
			95-127 (6.55- 8.73)	FLBS 40-250	7	5	LCR 1-09	20 HP	45 HP/3000 RPM	1HP
			84-134 (5.79- 9.23)	FLBS 65-250	8	5	LCR 1-10	25 HP	45 HP/3000 RPM	1HP
<b>150 (567)</b>	84-191 (5.79- 13.16)	FLBS 65-250	83-135 (5.72- 9.30)	FLBS 65-250	6	7.5	LCR 1-08	20 HP	45 HP/3000 RPM	1HP
					7	7.5	LCR 1-09	25 HP	45 HP/3000 RPM	1HP
					8	7.5	LCR 1-11	30 HP	45 HP/3000 RPM	1.5HP
					9	7.5	LCR 1-12	30 HP	45 HP/3000 RPM	1.5HP
<b>200 (757)</b>	81-191 (5.58-13.16)	FLBS 65-250	81-135 (5.58-9.30)	FLBS 65-250	5.7	9.9	LCR 1-09	20 HP	45 HP/3000 RPM	1HP
					6	10	LCR 1-10	20 HP	45 HP/3000 RPM	1HP
					7	10	LCR 1-11	25 HP	45 HP/3000 RPM	1.5HP
					8	10	LCR 1-13	30 HP	45 HP/3000 RPM	1.5HP
<b>250 (946)</b>	76-191 (5.24-13.16)	FLBS 65-250	78-134 (5.37-9.23)	FLBS 65-250	9	10	LCR 1-15	40 HP	45 HP/3000 RPM	2HP
					5.7	12.5	LCR 3-7	25 HP	45 HP/3000 RPM	1.5HP
					6	12.5	LCR 3-8	25 HP	45 HP/3000 RPM	1.5HP
					7	12	LCR 3-9	30 HP	45 HP/3000 RPM	1.5HP
					8	12.5	LCR 3-11	40 HP	45 HP/3000 RPM	2HP
<b>300 (1135)</b>	87-123 (5.99-8.48)  120-195 (8.27-13.44)	FLBS 100-200  FLBS 100-250	94-132 (6.48-9.10)	FLBS 100-250	6.5	15	LCR 3-10	50 HP	60 HP/3000 RPM	2HP
					7	15	LCR 3-10	50 HP	60 HP/3000 RPM	2HP
					8	15	LCR 3-12	60 HP	60 HP/3000 RPM	2HP
					9	15	LCR 3-13	75 HP	71 HP/3000 RPM	3HP

# Product range

## End Suction Fire Pumps

**FLBS**

### End Suction Quick Selection guide

Rated Capacity in GPM (LPM)	Pressure in PSI(Bar) for Electric Motor driven Pump	Pump Model for Electric Driven	Pressure in PSI(Bar) for Diesel Engine driven Pump	Pump Model for Diesel Engine Driven	Rated Pressure in Bar	Jockey Pump Flow in USgpm	Jockey Pump Model	Electric Motor HP @ (3550 RPM)	Ciarke DIESEL ENGINE HP @ (2100 RPM & 3000 RPM)	Jockey Pump HP @ 3450 RPM	
<b>400 (1514)</b>	86-122 (5.92 - 8.41)	FLBS 100-200	93-131 (6.41 - 9.03)	FLBS 100-250	6	20	LCR 4-6	50 HP	60 HP/3000 RPM	3HP	
					7	20	LCR 4-8-7	60 HP	60 HP/3000 RPM	3HP	
					8	20	LCR 4-8	60 HP	71 HP/3000 RPM	3HP	
	118-195 (8.13 - 13.4)	FLBS 100-250	122-207 (8.41 - 14.27)	FLBS 100-315	9	20	LCR 4-8	75 HP	71 HP/3000 RPM	3HP	
					10	20	LCR 4-9	100 HP	83 HP/3000 RPM	5HP	
					11	20	LCR 4-10	100 HP	115 HP/3000 RPM	5HP	
					12	20	LCR 4-11	100 HP	115 HP/3000 RPM	5HP	
					13	20	LCR 4-12	100 HP	115 HP/3000 RPM	5HP	
					14	20	LCR 4-13	125 HP	115 HP/3000 RPM	5HP	
	<b>450 (1703)</b>	84-122 (5.79 - 8.41)	FLBS 100-200	92-131 (6.34 - 9.03)	FLBS 100-250	6.5	22.5	LCR 4-6	50 HP	60 HP/3000 RPM	3HP
						7	22.5	LCR 4-8-7	60 HP	60 HP/3000 RPM	3HP
						8	22.5	LCR 4-8	75 HP	71 HP/3000 RPM	3HP
117-194 (8 - 13.37)		FLBS 100-250	121-207 (8.34 - 14.27)	FLBS 100-315	9	22.5	LCR 4-9	75 HP	83 HP/3000 RPM	5HP	
					10	22.5	LCR 4-10	100 HP	83 HP/3000 RPM	5HP	
					11	22.5	LCR 4-11	100 HP	115 HP/3000 RPM	5HP	
					12	22.5	LCR 4-11	100 HP	115 HP/3000 RPM	5HP	
					13	22.5	LCR 4-12	125 HP	115 HP/3000 RPM	5HP	
					14	22.5	LCR 4-13	125 HP	145 HP/3000 RPM	5HP	

# Product range

## End Suction Fire Pumps

# FLBS

### End Suction Quick Selection guide

Rated Capacity in GPM (LPM)	Pressure in PSI(Bar) for Electric Motor driven Pump	Pump Model for Electric Driven	Pressure in PSI(Bar) for Diesel Engine driven Pump	Pump Model for Diesel Engine Driven	Rated Pressure in Bar	Jockey Pump Flow in USgpm	Jockey Pump Model	Electric Motor HP @ (3550 RPM)	Clarke DIESEL ENGINE HP @ (2100 RPM & 3000 RPM)	Jockey Pump HP @ 3450 RPM	
<b>500 (1892)</b>	83-122 (5.72 - 8.41)	FLBS 100-200	91-130 (6.27 - 8.96)	FLBS 100-250	6.5	25	LCR 4-8-7	50 HP	60 HP/3000 RPM	3HP	
					7	25	LCR 4-8-7	60 HP	60 HP/3000 RPM	3HP	
					8	25	LCR 4-8	75 HP	71 HP/3000 RPM	3HP	
	116-194 (7.99 - 13.37)	FLBS 100-250	120-207 (8.27 - 14.27)	FLBS 100-315	9	25	LCR 4-9	100 HP	83 HP/3000 RPM	5HP	
					10	25	LCR 4-10	100 HP	115 HP/3000 RPM	5HP	
					11	25	LCR 4-11	100 HP	115 HP/3000 RPM	5HP	
					12	25	LCR 4-12	125 HP	115 HP/3000 RPM	5HP	
					13	25	LCR 4-13	125 HP	145 HP/3000 RPM	5HP	
					14	25	LCR 4-14	125 HP	145 HP/3000 RPM	5HP	
	<b>750 (2838)</b>	77-118 (5.30 - 8.1)	FLBS 100-200	86-125 (5.92 - 8.61)	FLBS 100-250	6	37.5	LCR 5-10	60 HP	71 HP/3000 RPM	3HP
						7	37.5	LCR 5-12	75 HP	83 HP/3000 RPM	5HP
						8	37.5	LCR 5-14	100 HP	115 HP/3000 RPM	5HP
110-191 (7.58 - 13.16)		FLBS 100-250	111-203 (7.65 - 13.99)	FLBS 100-315	9	37.5	LCR 5-15	100 HP	115 HP/3000 RPM	5HP	
					10	37.5	LCR 5-18	125 HP	115 HP/3000 RPM	7.5HP	
					11	37.5	LCR 5-18	125 HP	145 HP/3000 RPM	7.5HP	
					12	37.5	LCR 5-20	150 HP	145 HP/3000 RPM	7.5HP	
					13	37.5	LCR 5-22	150 HP	175 HP/3000 RPM	7.5HP	
					13.99	37.5	LCR 5-24	200 HP	175 HP/3000 RPM	7.5HP	

# Product range

## End Suction Fire Pumps

**FLBS**

### End Suction Quick Selection guide

Rated Capacity in GPM (LPM)	Pressure in PSI(Bar) for Electric Motor driven Pump	Pump Model for Electric Driven	Pressure in PSI(Bar) for Diesel Engine driven Pump	Pump Model for Diesel Engine Driven	Rated Pressure in Bar	Jockey Pump Flow in USgpm	Jockey Pump Model	Electric Motor HP @ (3550 RPM)	Clarke DIESEL ENGINE HP @ (2100 RPM & 3000 RPM)	Jockey Pump HP @ 3450 RPM	
<b>1000</b> <b>(3785)</b>	101-183 (6.96 - 12.61)	FLBS 125-250	104-188 (7.17 - 12.96)	FLBS 125-315	7.5	50	LCR 10-7	125 HP	115 HP/3000 RPM	5HP	
					8	50	LCR 10-7	125 HP	145 HP/3000 RPM	5HP	
					9	50	LCR 10-8	150 HP	145 HP/3000 RPM	7.5HP	
	153-220 (10.54 - 15.16)	FLBS 125-315				10	50	LCR 10-9	200 HP	175 HP/3000 RPM	7.5HP
						11	50	LCR 10-10	200 HP	216 HP/3000 RPM	7.5HP
						12	50	LCR 10-10	200 HP	216 HP/3000 RPM	7.5HP
						12.96	50	LCR 10-12	200 HP	216 HP/3000 RPM	7.5HP





## LUBI INDUSTRIES LLP

Near Kalyan Mills, Naroda Road, Ahmedabad-380 025, INDIA.  
Phone : +91 - 79 - 30610100, Fax No. :+91 - 79 - 30610300.

**Sales Enquiries:** [indsales@lubipumps.com](mailto:indsales@lubipumps.com), [expsales@lubipumps.com](mailto:expsales@lubipumps.com)

**[www.lubipumps.com](http://www.lubipumps.com)**

*Product Improvement is a continuous process at 'LUBI'. The data given in this publication is therefore subject to revision.*

00.00.050718.0171



**Toll Free Service Hotline for India : 1800 419 3055**